

KUPERLAND

AGRICULTURAL INVESTING

Farm Land
78 M/L Acres
Bulter County, IA

Sold \$690,300 / \$8,850 ac.

\$107 CSR2 Point

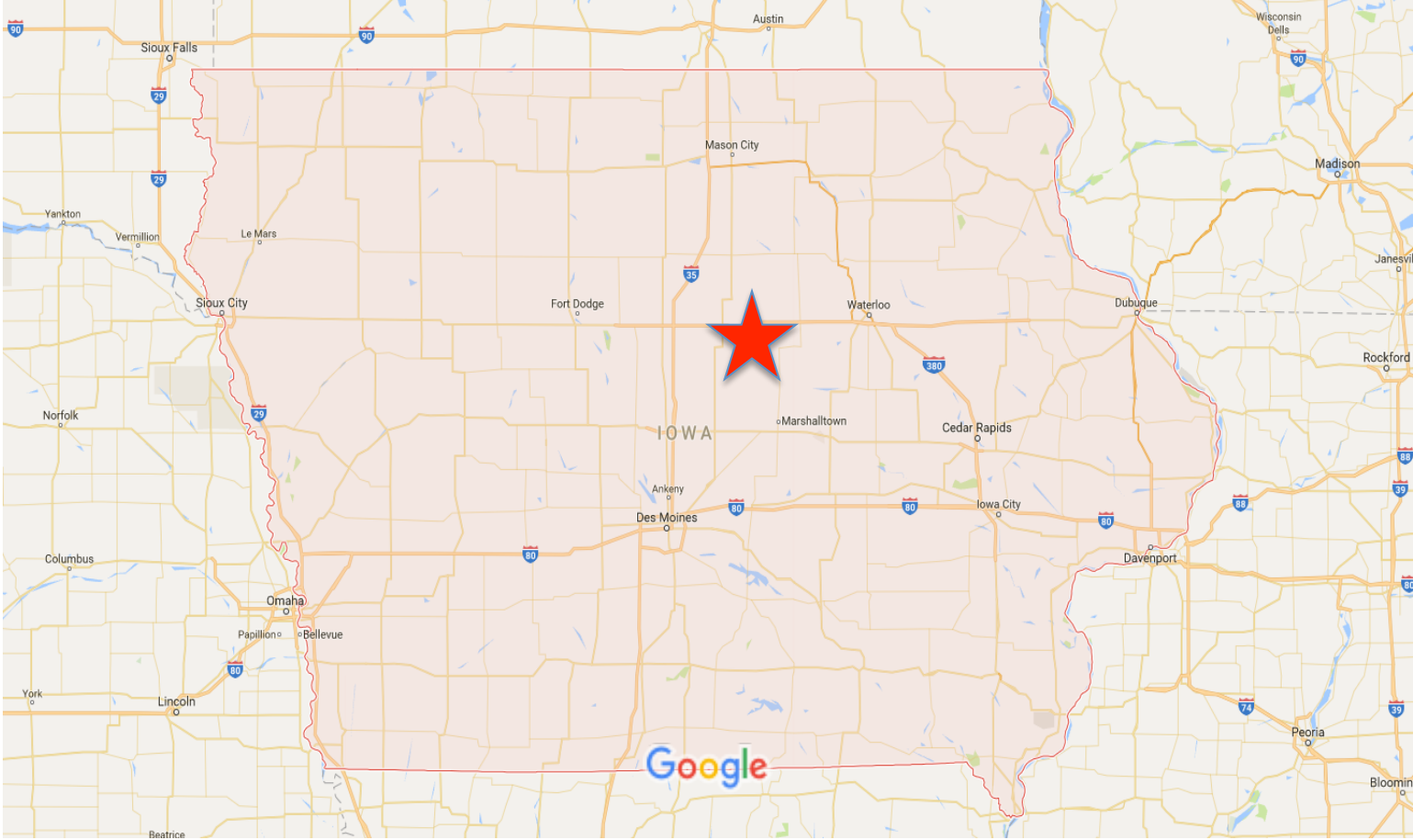
Prepared by:


KUPERLAND

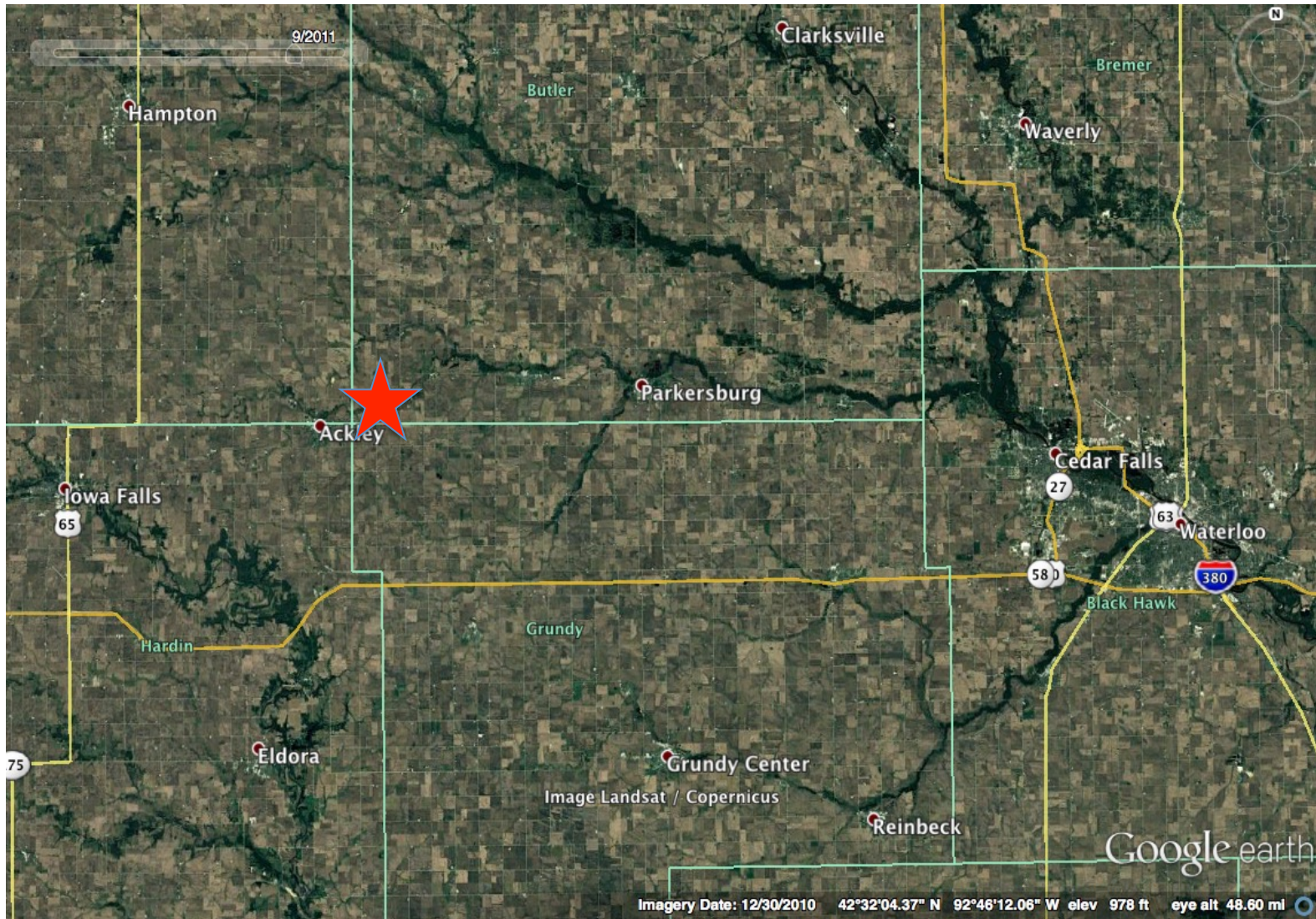
AGRICULTURAL INVESTING

4672 Glass Ave
St. Ansgar, IA 50472
(641) 425-8617

Reed@Kuperland.com



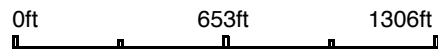
Map data ©2017 Google 20 mi 



Aerial Map



map center: 42° 33' 37.7, -92° 59' 55.55



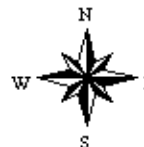
KUPERLAND

Maps Provided By:

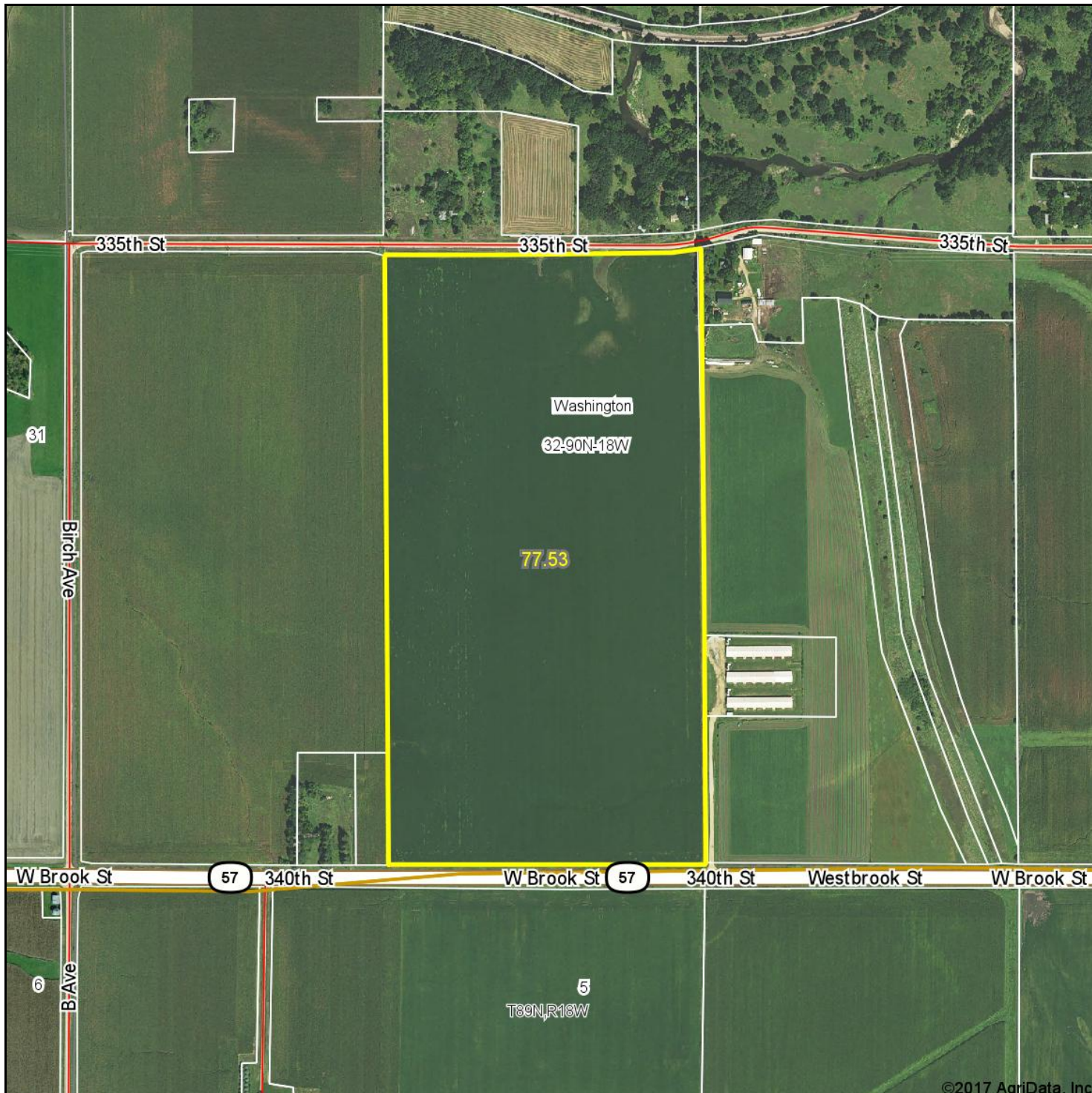


© AgriData, Inc. 2017 www.AgriDataInc.com

32-90N-18W
Butler County
Iowa

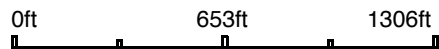


Aerial Map



©2017 AgriData, Inc.

map center: 42° 33' 37.7, -92° 59' 55.55

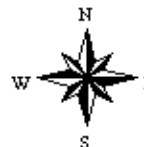


KUPERLAND

Maps Provided By:

© AgriData, Inc. 2017 www.AgriDataInc.com

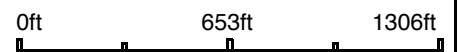
32-90N-18W
Butler County
Iowa



Aerial Map



map center: 42° 33' 37.7, -92° 59' 55.55



KUPERLAND

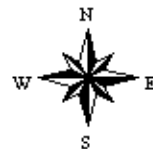
Maps Provided By:



© AgriData, Inc. 2017

www.AgriDataInc.com

32-90N-18W
Butler County
Iowa

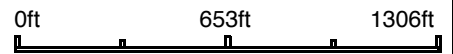


Aerial Map



©2017 AgriData, Inc.

map center: 42° 33' 37.7, -92° 59' 55.55



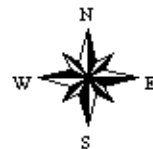
KUPERLAND

Maps Provided By:

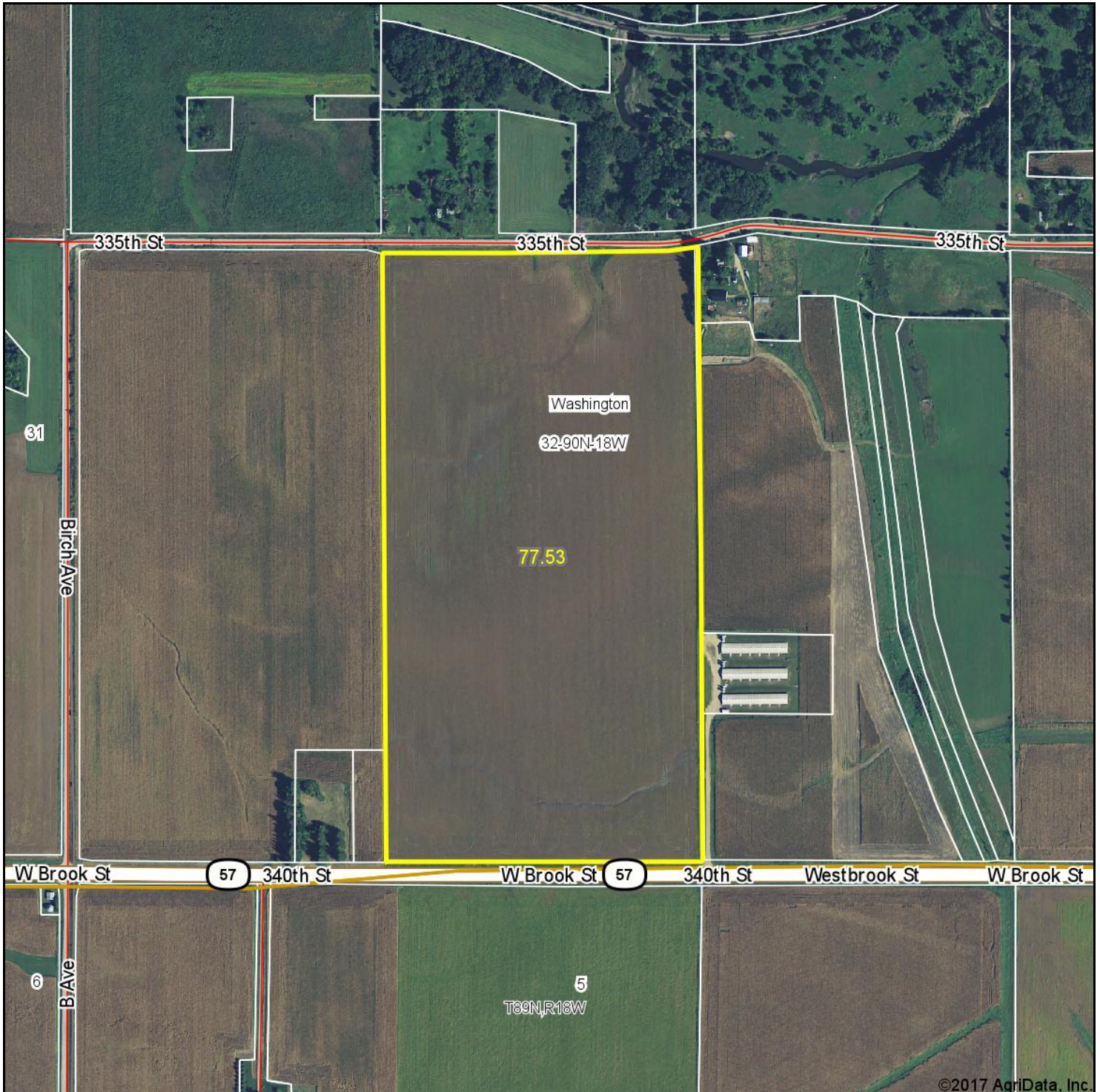


© AgriData, Inc. 2017 www.AgriDataInc.com

32-90N-18W
Butler County
Iowa

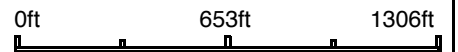


Aerial Map



©2017 AgriData, Inc.

map center: 42° 33' 37.7, -92° 59' 55.55



KUPERLAND

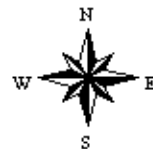
Maps Provided By:



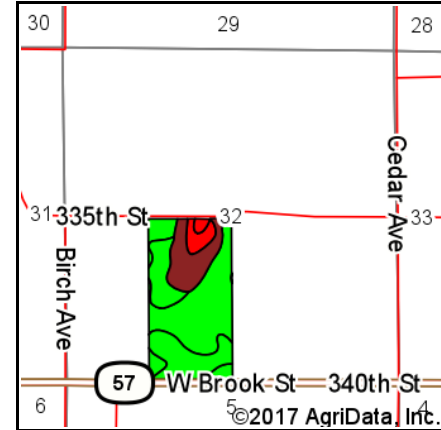
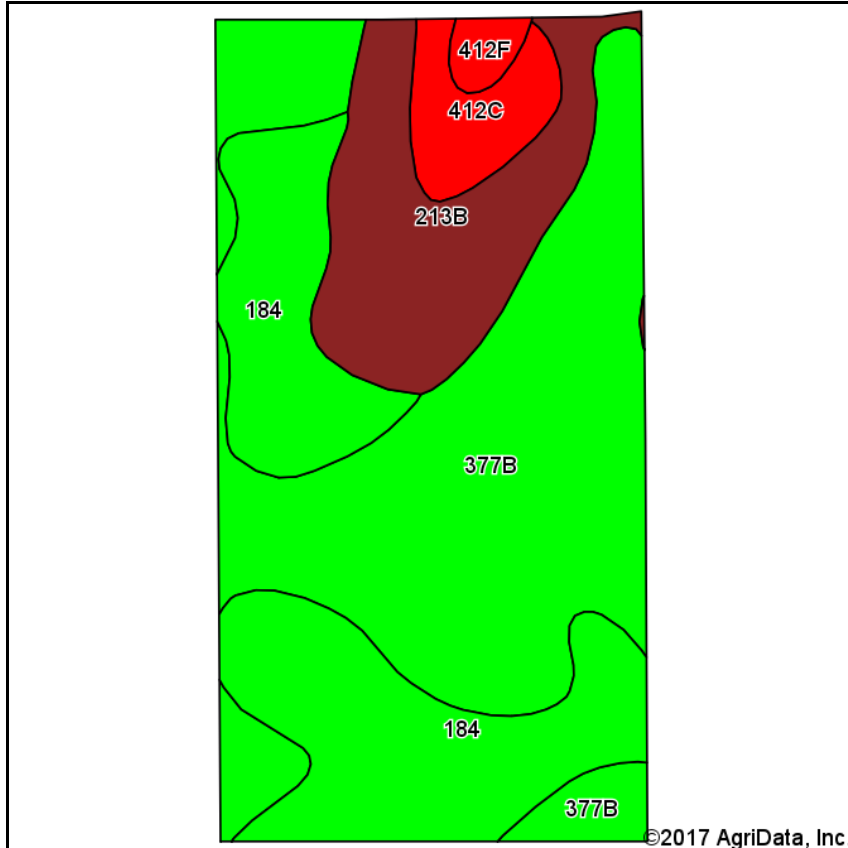
© AgriData, Inc. 2017

www.AgriDataInc.com

32-90N-18W
Butler County
Iowa



Soils Map



State: **Iowa**
 County: **Butler**
 Location: **32-90N-18W**
 Township: **Washington**
 Acres: **77.53**
 Date: **1/23/2017**






KUPERLAND
 Maps Provided By:

 CUSTOMIZED ONLINE MAPPING
 © AgriData, Inc. 2017 www.AgriDataInc.com

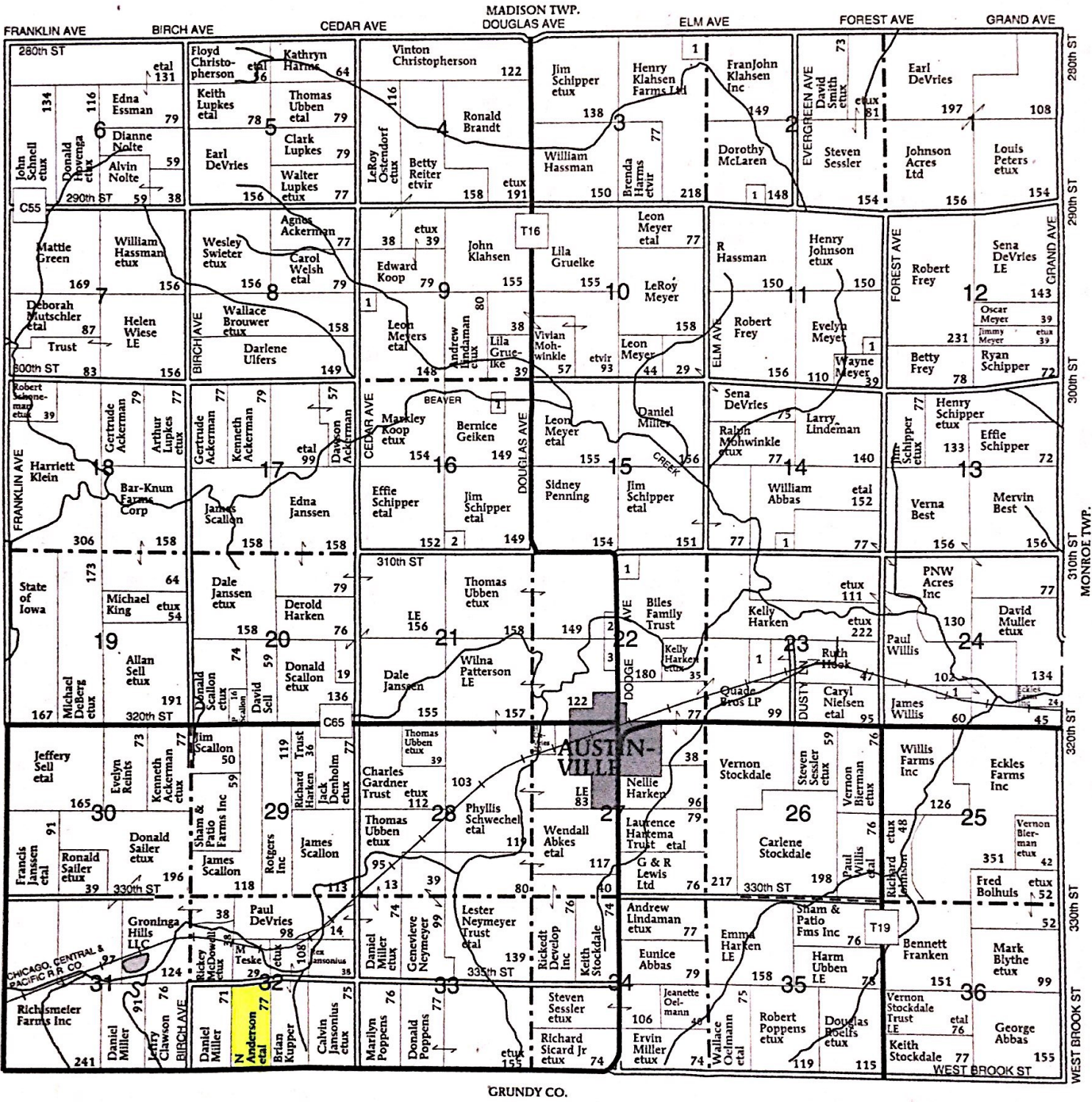


Soils data provided by USDA and NRCS.

Area Symbol: IA023, Soil Area Version: 22

| Code | Soil Description | Acres | Percent of field | CSR2 Legend | Non-Irr Class *c | *i Corn | *i Soybeans | CSR2** | CSR |
|-------------------------|---|-------|------------------|---|------------------|--------------|-------------|-------------|-----------|
| 377B | Dinsdale silty clay loam, 2 to 5 percent slopes | 36.89 | 47.6% |  | Ile | 232 | 67.3 | 94 | 90 |
| 184 | Klinger silty clay loam, 1 to 4 percent slopes | 23.10 | 29.8% |  | Iw | 240 | 69.6 | 95 | 95 |
| 213B | Rockton loam, 30 to 40 inches to limestone, 2 to 5 percent slopes | 12.75 | 16.4% |  | Ile | 164.8 | 47.8 | 53 | 74 |
| 412C | Sogn loam, 2 to 9 percent slopes | 3.78 | 4.9% |  | IVs | 88 | 25.5 | 5 | 13 |
| 412F | Sogn loam, 9 to 30 percent slopes | 1.01 | 1.3% |  | Vlls | 88 | 25.5 | 5 | 5 |
| Weighted Average | | | | | | 214.4 | 62.2 | 82.1 | 84 |

**IA has updated the CSR values for each county to CSR2.
 *i Yield data provided by the ISPAID Database version 8.1 developed by IA State University.



WASHINGTON TOWNSHIP SECTION 2
1. Sessler, Steve

SECTION 3
1. Kammpan, Grant
SECTION 9
1. Koop, James

SECTION 11
1. Paulding, Alan
SECTION 14
1. Abbas, Calvin

SECTION 16
1. Gelken, Dennis
2. Quandt, Alvin
SECTION 22

1. Mohwinkle, Ralph
2. Nevenhoven, Kevin
3. Lyons, Shaun
SECTION 23

1. Hook, Sandra
SECTION 24
1. PNW Acres Inc