

KUPERLAND

AGRICULTURAL INVESTING

Farm Land
149 M/L Acres
Grundy County, IA

Sold - \$1,318,650 / \$8,850 ac.

\$101 CSR Point

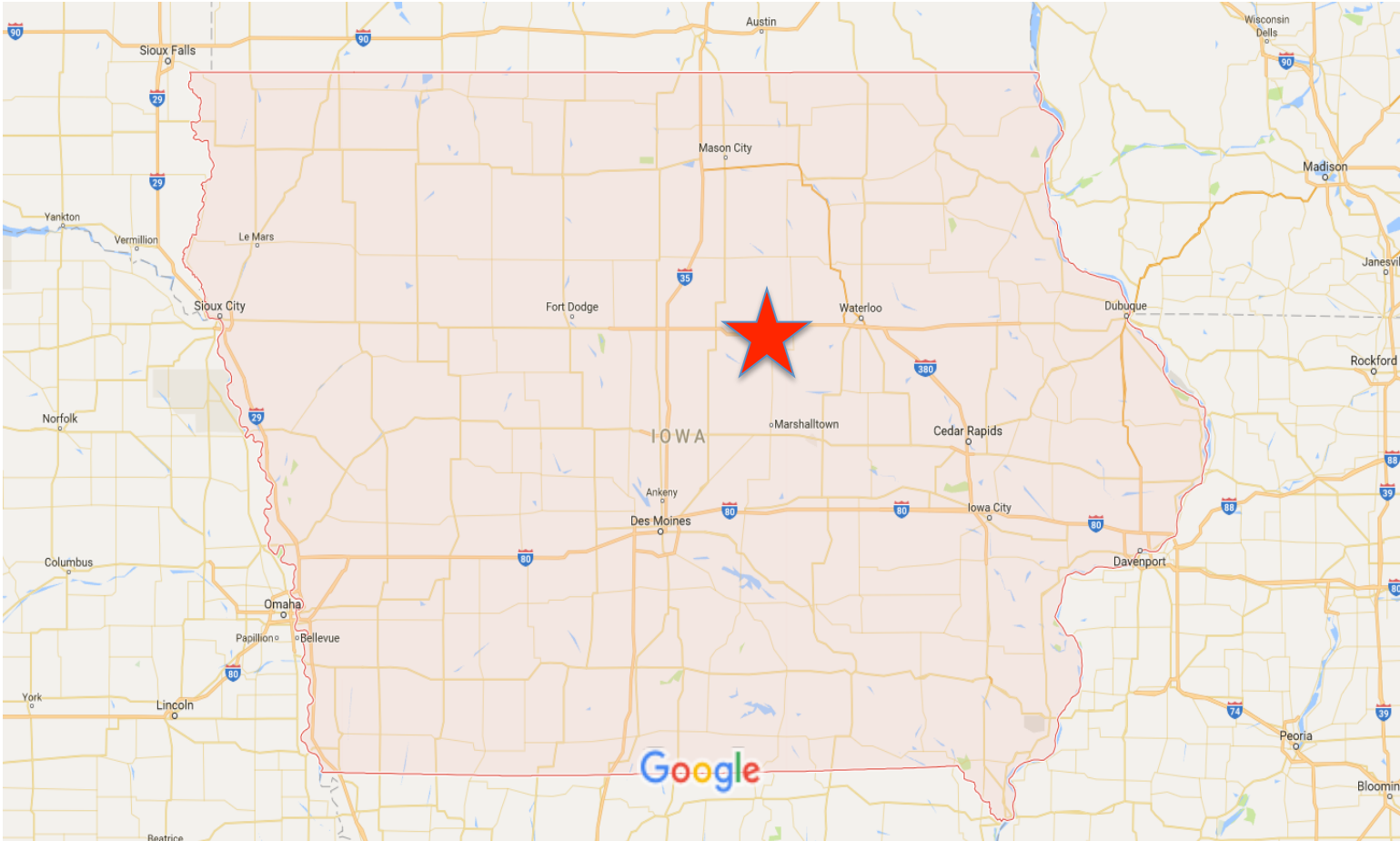
Prepared by:

KUPERLAND

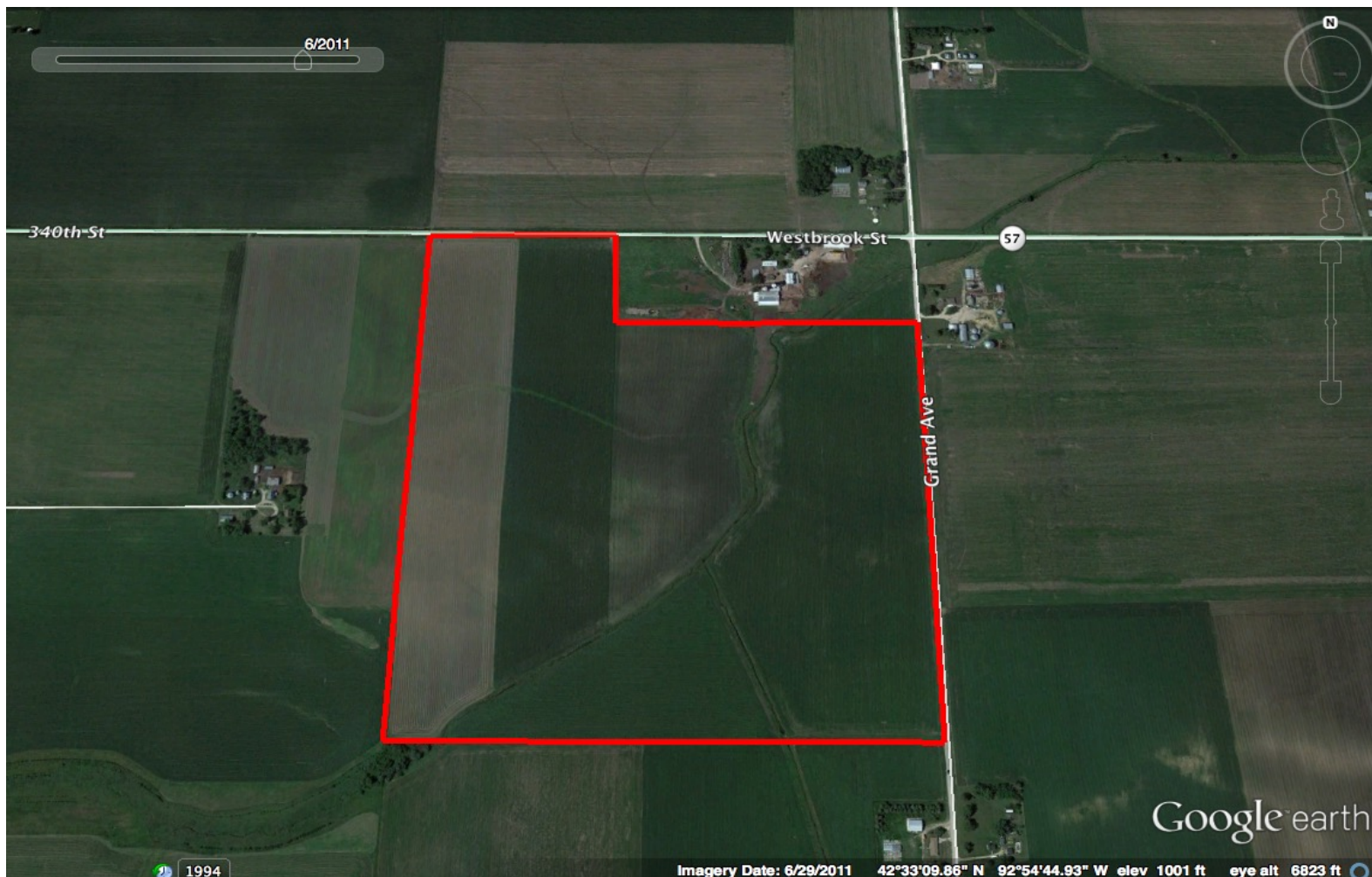
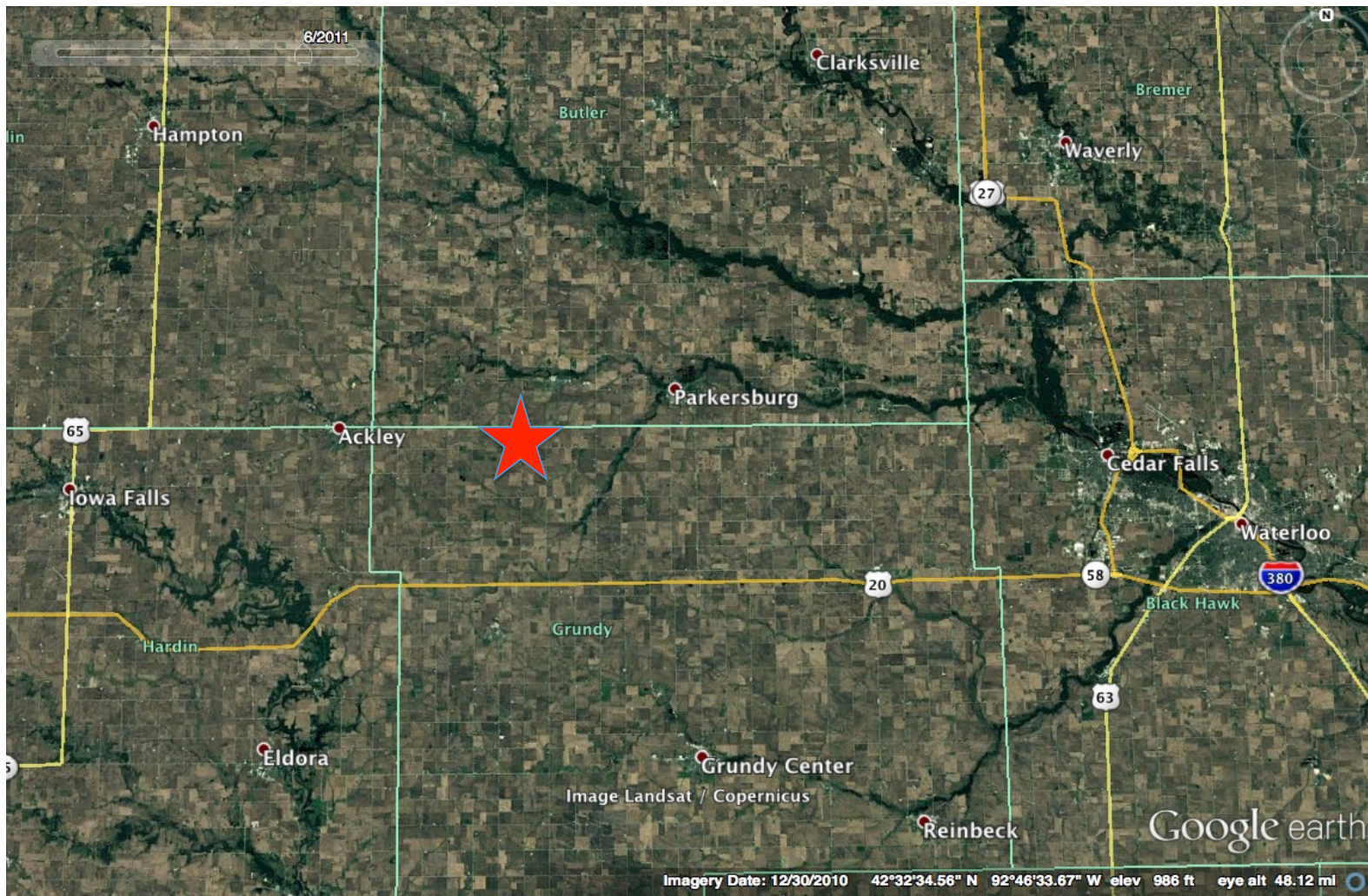
AGRICULTURAL INVESTING

4672 Glass Ave
St. Ansgar, IA 50472
(641) 425-8617

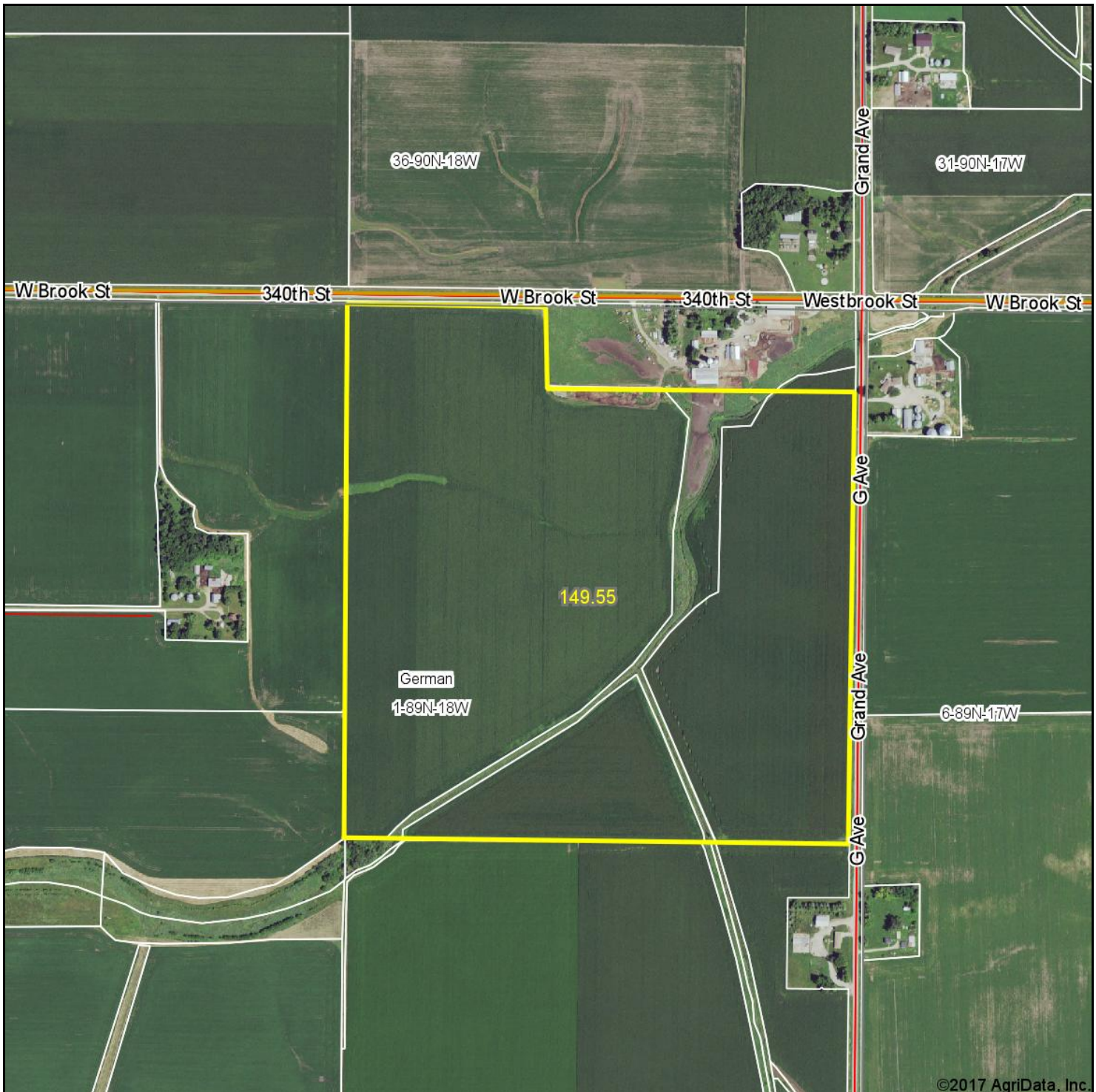
Reed@Kuperland.com



Map data ©2017 Google 20 mi

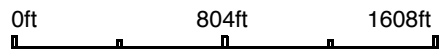


Aerial Map



©2017 AgriData, Inc.

map center: 42° 33' 9.7, -92° 54' 50.26



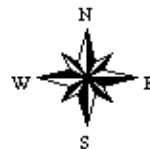
KUPERLAND

Maps Provided By:

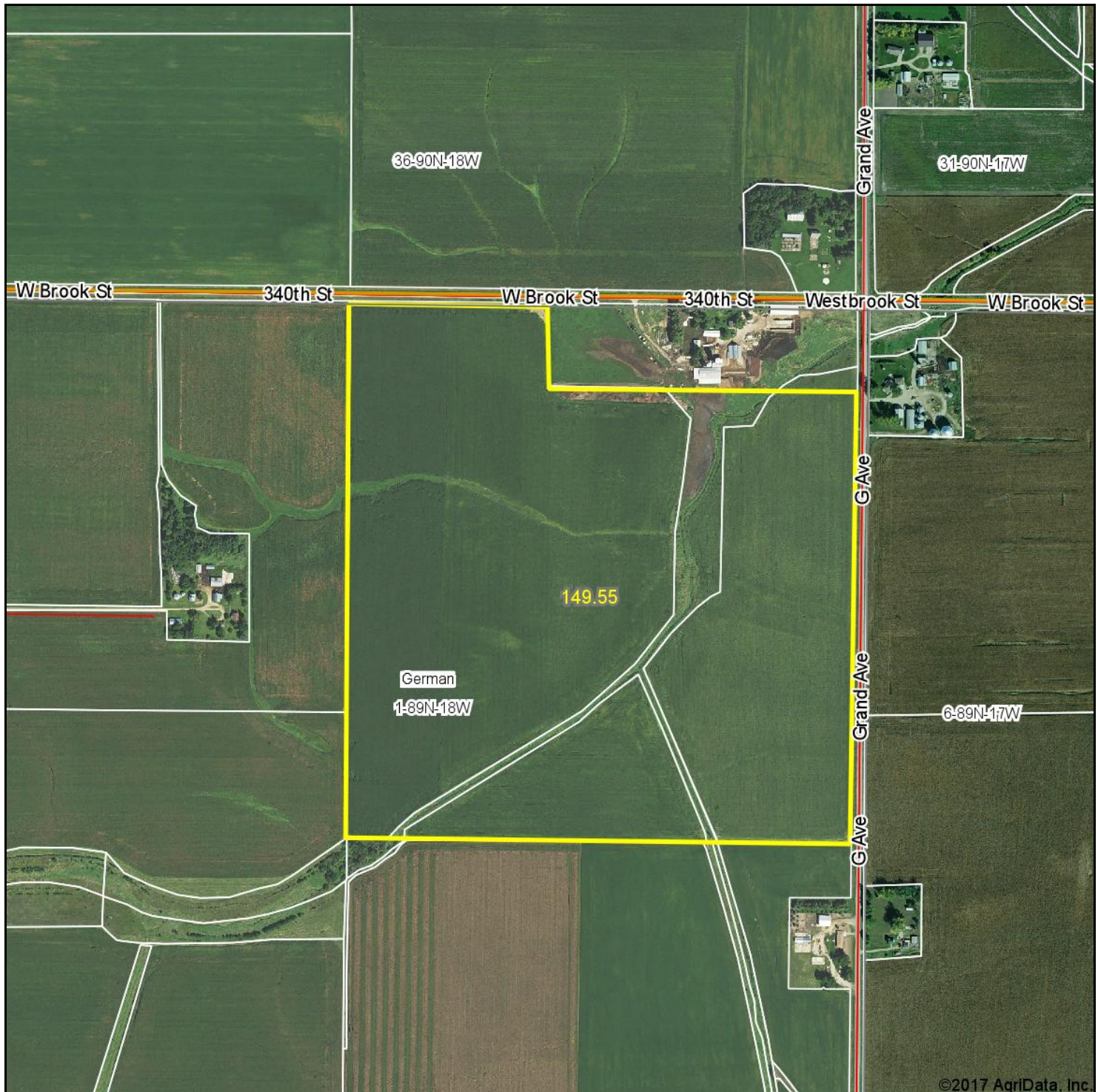
CUSTOMIZED ONLINE MAPPING

© AgriData, Inc. 2017 www.AgriDataInc.com

1-89N-18W
Grundy County
Iowa

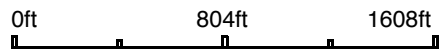


Aerial Map



©2017 AgriData, Inc.

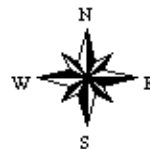
map center: 42° 33' 9.7, -92° 54' 50.26



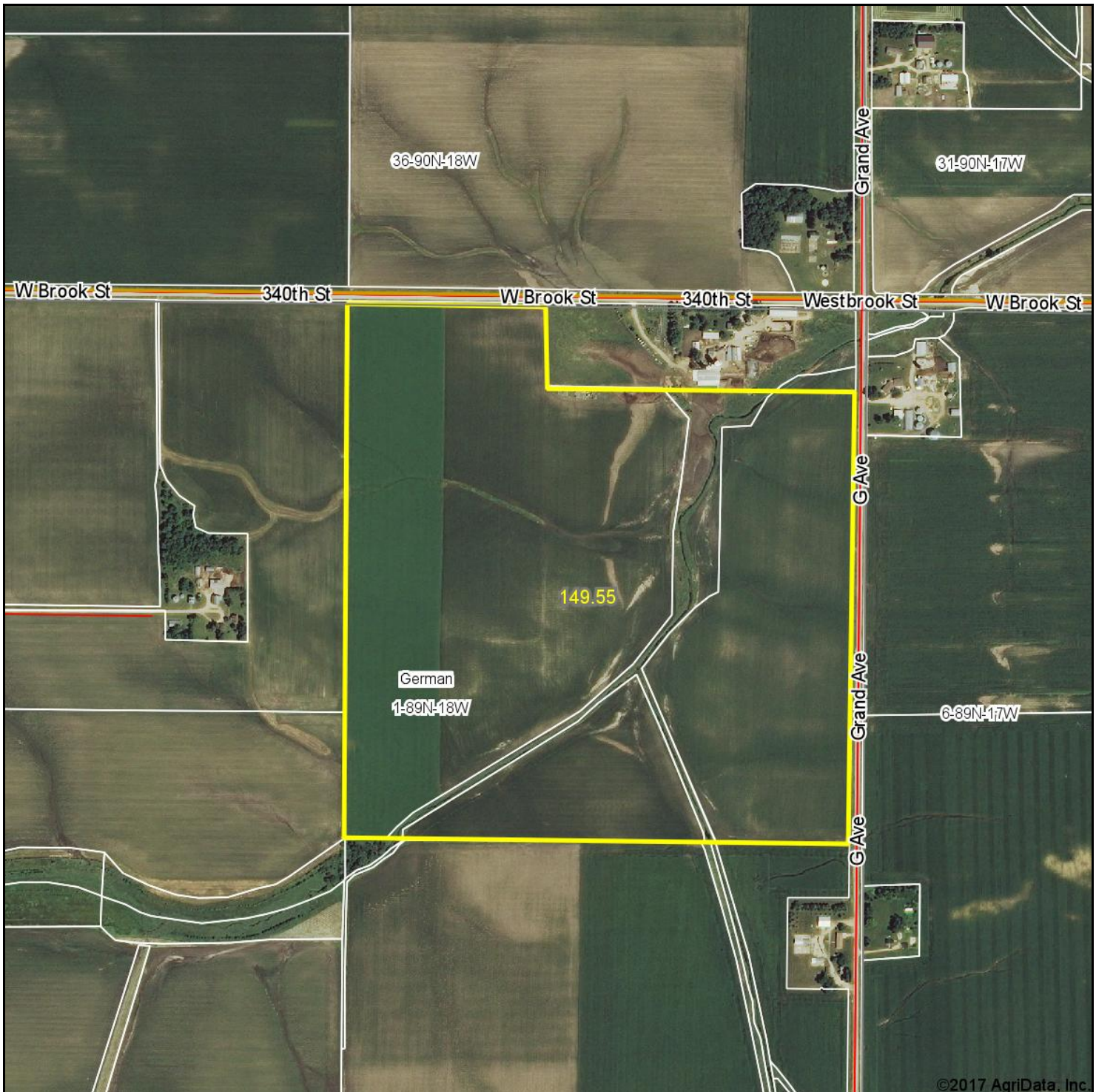
KUPERLAND



1-89N-18W
Grundy County
Iowa

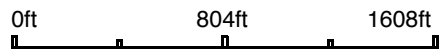


Aerial Map



©2017 AgriData, Inc.

map center: 42° 33' 9.7, -92° 54' 50.26

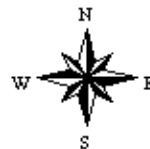


KUPERLAND

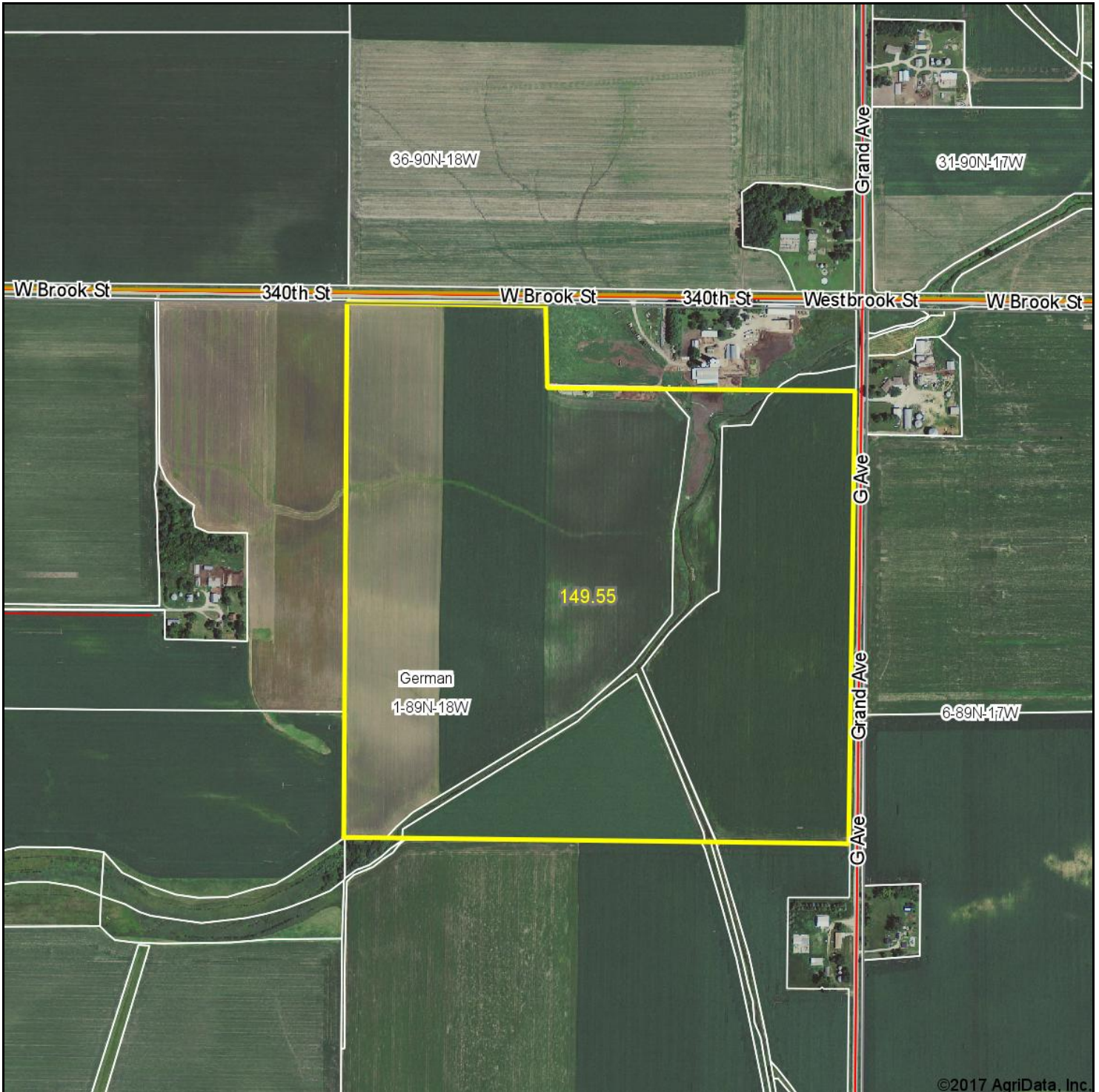
Maps Provided By:

surety
CUSTOMIZED ONLINE MAPPING
© AgriData, Inc. 2017 www.AgriDataInc.com

1-89N-18W
Grundy County
Iowa

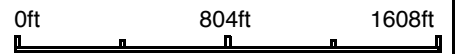


Aerial Map



©2017 AgriData, Inc.

map center: 42° 33' 9.7, -92° 54' 50.26

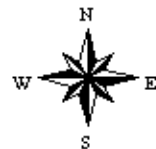


KUPERLAND

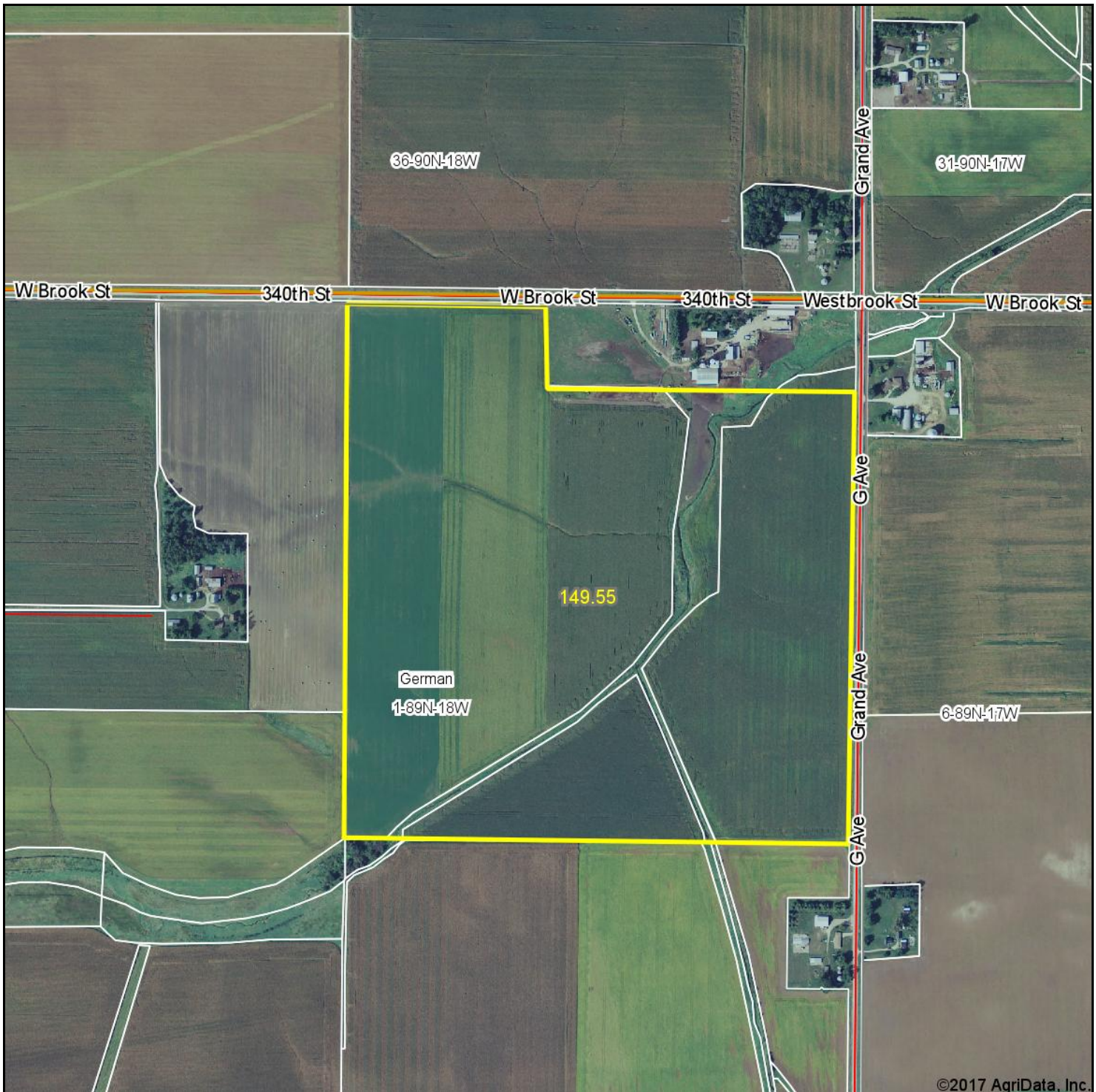
Maps Provided By:

 CUSTOMIZED ONLINE MAPPING
 © AgriData, Inc. 2017 www.AgriDataInc.com

1-89N-18W
Grundy County
Iowa

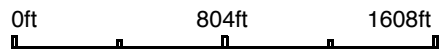


Aerial Map



©2017 AgriData, Inc.

map center: 42° 33' 9.7, -92° 54' 50.26

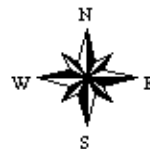


KUPERLAND

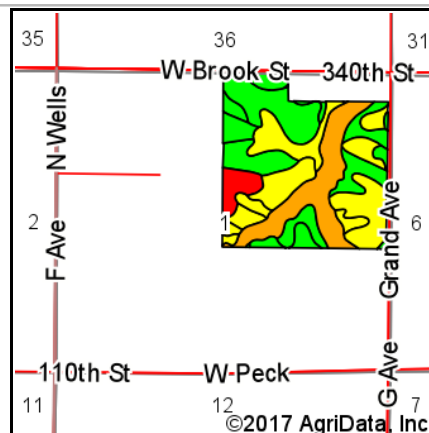
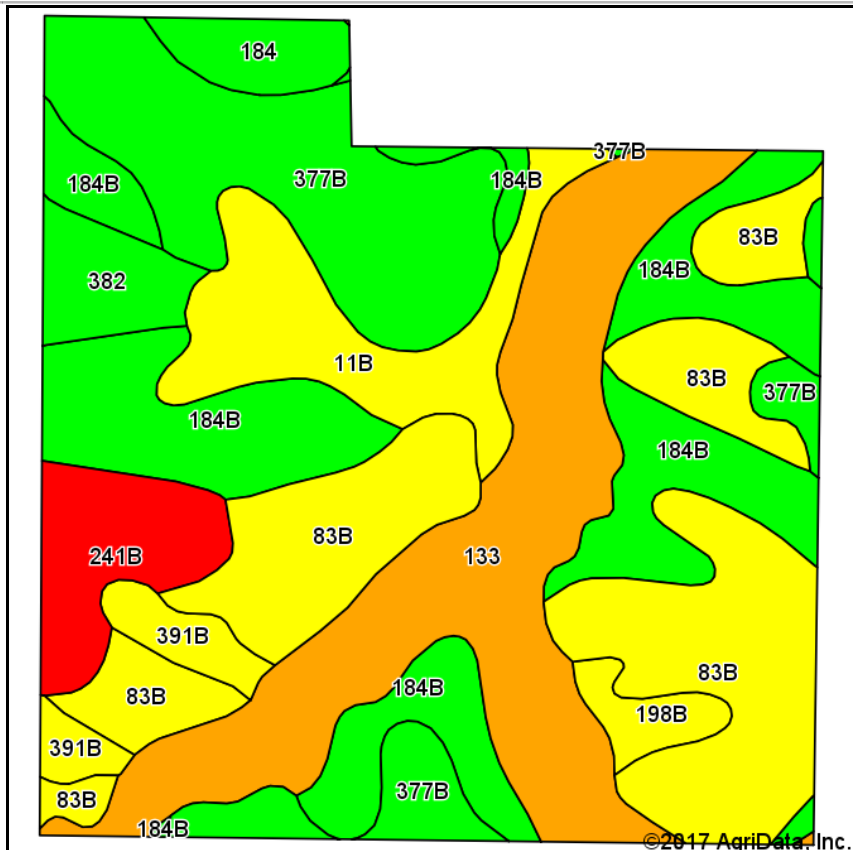
Maps Provided By:

 CUSTOMIZED ONLINE MAPPING
 © AgriData, Inc. 2017 www.AgriDataInc.com

1-89N-18W
Grundy County
Iowa



Soils Map



State: **Iowa**
 County: **Grundy**
 Location: **1-89N-18W**
 Township: **German**
 Acres: **149.55**
 Date: **1/23/2017**










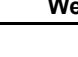
KUPERLAND

Maps Provided By:  **surety**
 CUSTOMIZED ONLINE MAPPING
 © AgriData, Inc. 2017 www.AgriDataInc.com



Soils data provided by USDA and NRCS.

Area Symbol: IA075, Soil Area Version: 22

Code	Soil Description	Acres	Percent of field	CSR2 Legend	Non-Irr Class *c	*i Corn	*i Soybeans	CSR2**	CSR
83B	Kenyon loam, 2 to 5 percent slopes	34.10	22.8%		Ile	225.6	65.4	90	86
184B	Klinger silty clay loam, 2 to 5 percent slopes	29.94	20.0%		Ile	232	67.3	95	90
133	Colo silty clay loam, 0 to 2 percent slopes, occasionally flooded	29.74	19.9%		Ilw	204.8	59.4	78	80
377B	Dinsdale silty clay loam, 2 to 5 percent slopes	24.36	16.3%		Ile	232	67.3	94	90
11B	Colo-Ely complex, 0 to 5 percent slopes	11.62	7.8%		Ilw	204.8	59.4	83	68
241B	Saude-Lilah complex, 2 to 5 percent slopes	6.90	4.6%		Ile	144	41.8	48	58
382	Maxfield silty clay loam, 0 to 2 percent slopes	4.02	2.7%		Ilw	230.4	66.8	94	90
391B	Clyde-Floyd complex, 1 to 4 percent slopes	3.50	2.3%		Ilw	216	62.6	87	76
184	Klinger silty clay loam, 1 to 4 percent slopes	3.18	2.1%		Iw	240	69.6	95	95
198B	Floyd loam, 1 to 4 percent slopes	2.19	1.5%		Ilw	222.4	64.5	89	80
Weighted Average						218.6	63.4	86.9	83.5

**IA has updated the CSR values for each county to CSR2.

*i Yield data provided by the ISPAID Database version 8.1 developed by IA State University.

