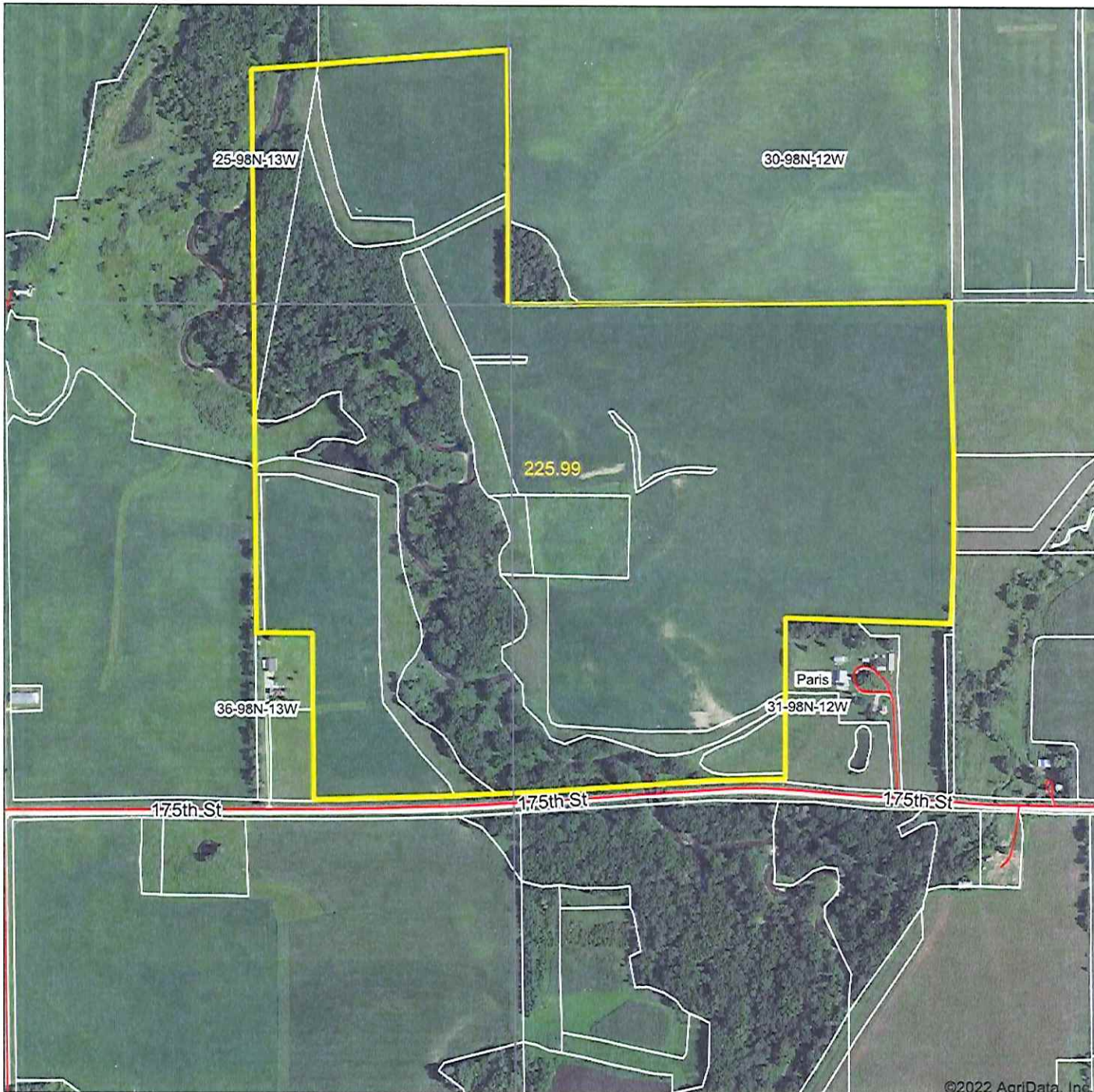


# Aerial Map



Map Center: 43.266008, -92.316599

0ft 811ft 1622ft

KUPERLAND

Maps Provided By:  
 **surety**  
CUSTOMIZED ONLINE MAPPING  
© AgriData, Inc. 2021 www.AgriDataInc.com

**31-98N-12W**  
**Howard County**  
**Iowa**

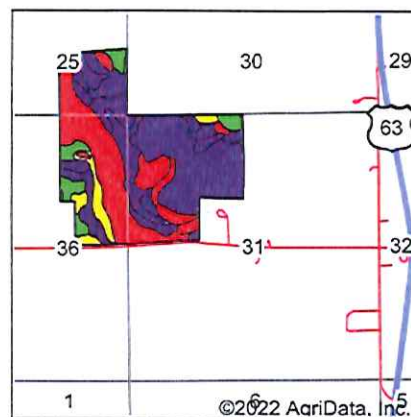
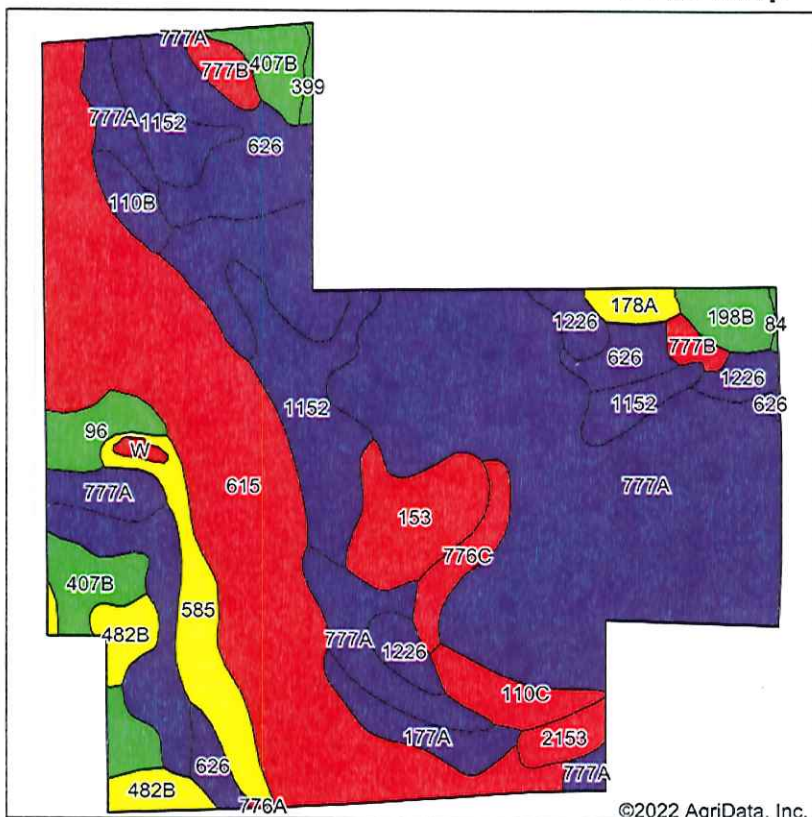


9/16/2022

Field borders provided by Farm Service Agency as of 5/21/2008.



# Soils Map



State: Iowa  
 County: Howard  
 Location: 31-98N-12W  
 Township: Paris  
 Acres: 225.99  
 Date: 9/16/2022

KUPPERLAND

Maps Provided By:



Soils data provided by USDA and NRCS.

©2022 AgriData, Inc.

© AgriData, Inc. 2021

www.AgrDataInc.com

Area Symbol: IA089, Soil Area Version: 29

Code	Soil Description	Acres	Percent of field	CSR2 Legend	Non-Irr Class *c	*i Corn Bu	*i Soybeans Bu	CSR2**	CSR
777A	Wapsie loam, 0 to 2 percent slopes	78.39	34.7%	■	Ils	80.0	23.2	55	58
615	Spillville-Colo complex, channeled	49.86	22.1%	■	Vw	120.0	34.8	25	25
1152	Marshan clay loam, 0 to 2 percent slopes, rarely flooded	17.11	7.6%	■	Ilw	80.0	23.2	54	66
626	Hayfield loam, 0 to 2 percent slopes, rarely flooded	13.63	6.0%	■	Ils	80.0	23.2	53	65
177A	Saude loam, 0 to 2 percent slopes	10.87	4.8%	■	Ils	80.0	23.2	60	63
407B	Schley silt loam, 1 to 4 percent slopes	8.32	3.7%	■	Ilw	196.8	57.1	81	70
153	Marshan clay loam, depressional	7.66	3.4%	■	Illw	80.0	23.2	28	65
585	Coland-Spillville complex, 0 to 2 percent slopes, occasionally flooded	7.42	3.3%	■	Ilw	208.0	60.3	70	85
1226	Lawler loam, 0 to 2 percent slopes, rarely flooded	5.47	2.4%	■	Ils	80.0	23.2	59	70
482B	Racine loam, 2 to 5 percent slopes	4.46	2.0%	■	Ile	212.8	61.7	76	78
110C	Lamont fine sandy loam, 5 to 9 percent slopes	3.70	1.6%	■	Ille	166.4	48.3	47	32
776C	Lilah sandy loam, 3 to 9 percent slopes	3.18	1.4%	■	IVe	88.0	25.5	5	15
96	Turlin silt loam, acid variant	3.17	1.4%	■	Ilw	225.6	65.4	87	90
198B	Floyd loam, 1 to 4 percent slopes	2.91	1.3%	■	Ilw	222.4	64.5	89	78
777B	Wapsie loam, 2 to 5 percent slopes	2.88	1.3%	■	Ile	80.0	23.2	50	53
2153	Shandep clay loam, 0 to 2 percent slopes, ponded, occasionally flooded	2.10	0.9%	■	Vw			21	
110B	Lamont fine sandy loam, 2 to 5 percent slopes	2.08	0.9%	■	Ille	182.4	52.9	52	47
178A	Waukee loam, 0 to 2 percent slopes	1.62	0.7%	■	Ils	80.0	23.2	69	79
W	Water	0.47	0.2%	■		0.0	0.0	0	0

Soils data provided by USDA and NRCS.



Code	Soil Description	Acres	Percent of field	CSR2 Legend	Non-Irr Class *c	*i Corn Bu	*i Soybeans Bu	CSR2**	CSR	
399	Readlyn silt loam, 1 to 3 percent slopes	0.46	0.2%		lw			91		
84	Clyde silty clay loam, 0 to 3 percent slopes	0.15	0.1%		llw	224.0	65.0	88	73	
776A	Lilah sandy loam, 0 to 3 percent slopes	0.08	0.0%		IVs	80.0	23.2	5	33	
<b>Weighted Average</b>						<b>*-</b>	<b>105.3</b>	<b>30.5</b>	<b>49.2</b>	<b>*-</b>

\*\*IA has updated the CSR values for each county to CSR2.

\*- CSR weighted average cannot be calculated on the current soils data, use prior data version for csr values.

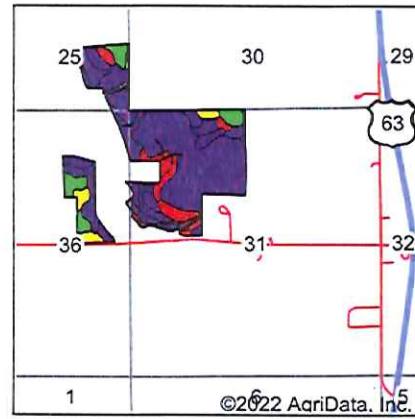
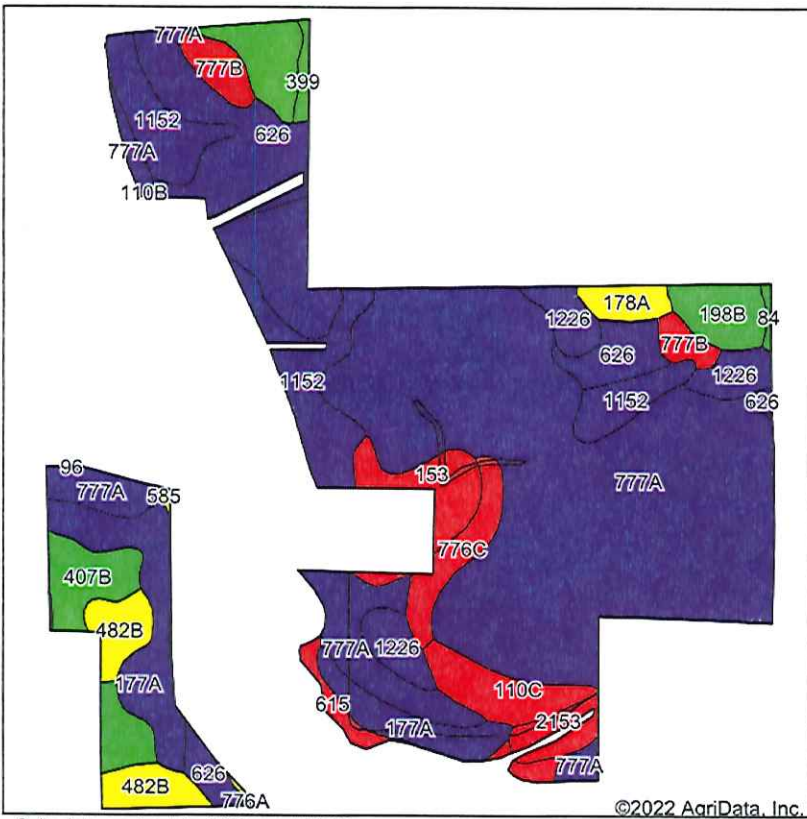
\*i Yield data provided by the ISPAID Database version 8.1.1 developed by IA State University.

\*c: Using Capabilities Class Dominant Condition Aggregation Method

\*- Non Irr Class weighted average cannot be calculated on the current soils data due to missing data.



# Soils Map



State: Iowa  
 County: Howard  
 Location: 36-98N-13W  
 Township: Howard  
 Acres: 147.9  
 Date: 9/16/2022

KUPPERLAND

Maps Provided By:



Soils data provided by USDA and NRCS.

©2022 AgriData, Inc.

Area Symbol: IA089, Soil Area Version: 29

Code	Soil Description	Acres	Percent of field	CSR2 Legend	Non-Irr Class *c	*i Corn Bu	*i Soybeans Bu	CSR2**	CSR	
777A	Wapsie loam, 0 to 2 percent slopes	72.20	48.8%	■	IIs	80.0	23.2	55	58	
1152	Marshan clay loam, 0 to 2 percent slopes, rarely flooded	12.61	8.5%	■	IIw	80.0	23.2	54	66	
626	Hayfield loam, 0 to 2 percent slopes, rarely flooded	12.16	8.2%	■	IIs	80.0	23.2	53	65	
177A	Saude loam, 0 to 2 percent slopes	10.23	6.9%	■	IIs	80.0	23.2	60	63	
407B	Schley silt loam, 1 to 4 percent slopes	8.24	5.6%	■	IIw	196.8	57.1	81	70	
1226	Lawler loam, 0 to 2 percent slopes, rarely flooded	5.50	3.7%	■	IIs	80.0	23.2	59	70	
482B	Racine loam, 2 to 5 percent slopes	4.40	3.0%	■	Ile	212.8	61.7	76	78	
110C	Lamont fine sandy loam, 5 to 9 percent slopes	3.70	2.5%	■	IIIe	166.4	48.3	47	32	
153	Marshan clay loam, depressional	3.64	2.5%	■	IIIw	80.0	23.2	28	65	
776C	Lilah sandy loam, 3 to 9 percent slopes	3.06	2.1%	■	IVe	88.0	25.5	5	15	
198B	Floyd loam, 1 to 4 percent slopes	2.99	2.0%	■	IIw	222.4	64.5	89	78	
777B	Wapsie loam, 2 to 5 percent slopes	2.88	1.9%	■	Ile	80.0	23.2	50	53	
2153	Shandep clay loam, 0 to 2 percent slopes, ponded, occasionally flooded	1.79	1.2%	■	Vw			21		
615	Spillville-Colo complex, channeled	1.77	1.2%	■	Vw	120.0	34.8	25	25	
178A	Waukee loam, 0 to 2 percent slopes	1.66	1.1%	■	IIs	80.0	23.2	69	79	
399	Readlyn silt loam, 1 to 3 percent slopes	0.62	0.4%	■	Iw			91		
84	Clyde silty clay loam, 0 to 3 percent slopes	0.25	0.2%	■	IIw	224.0	65.0	88	73	
585	Coland-Spillville complex, 0 to 2 percent slopes, occasionally flooded	0.20	0.1%	■	IIw	208.0	60.3	70	85	
<b>Weighted Average</b>						<b>2.16</b>	<b>95.3</b>	<b>27.6</b>	<b>55.6</b>	<b>*-</b>

\*\*IA has updated the CSR values for each county to CSR2.

Soil weighted average cannot be calculated on the current soils data, use prior data version for csr values.